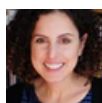
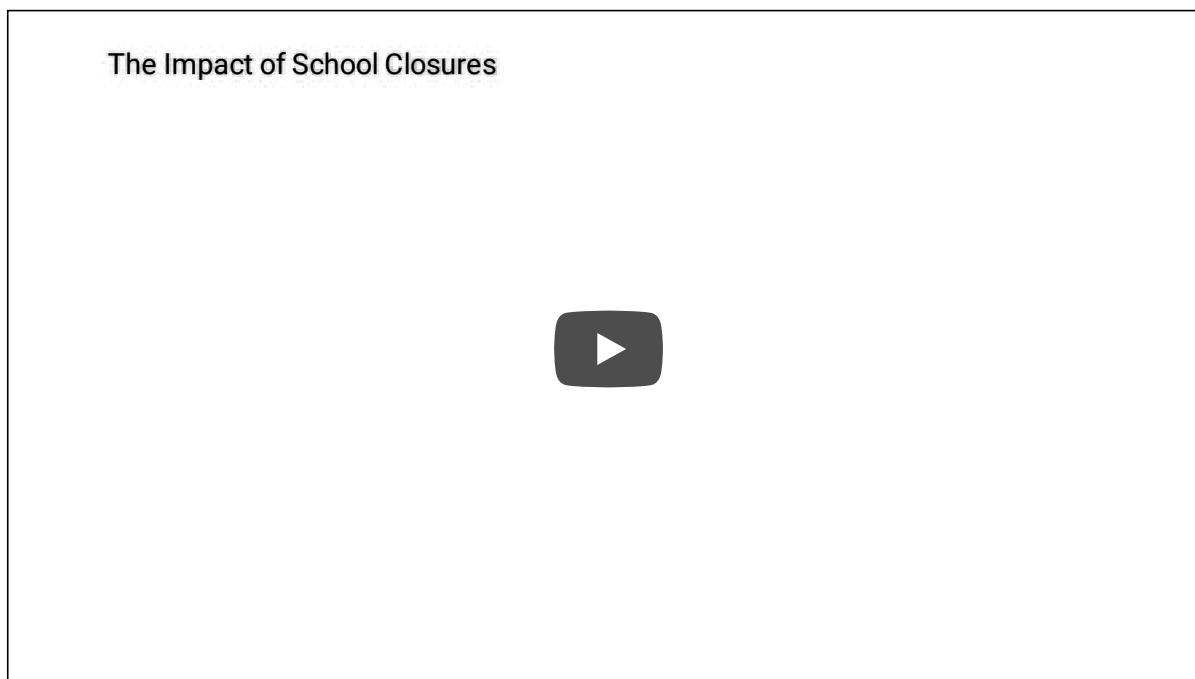


# The Impact of School Closures



**Nicole Siegel**

Senior Education Communications Manager

[@NSiegel\\_DC](https://twitter.com/NSiegel_DC)



**Shelbe Klebs**

Education Policy Advisor

[@ShelbeKlebs](https://twitter.com/ShelbeKlebs)



**Tamara Hiler**

Director of Education

[@TamaraHiler](https://twitter.com/TamaraHiler)

Since 2014, nearly 500,000 students that attended college expecting to benefit from the economic and social mobility that higher education affords were left in the lurch after their colleges unexpectedly closed, many due to financial hardships. Our latest video shows how these sudden closures can be devastating for our most vulnerable students—and how these unchecked closures are a clear example of the need for greater federal consumer protection guardrails on the front end to prevent students and taxpayers from facing this situation in the first place.

## TOPICS

**HIGHER EDUCATION** 353