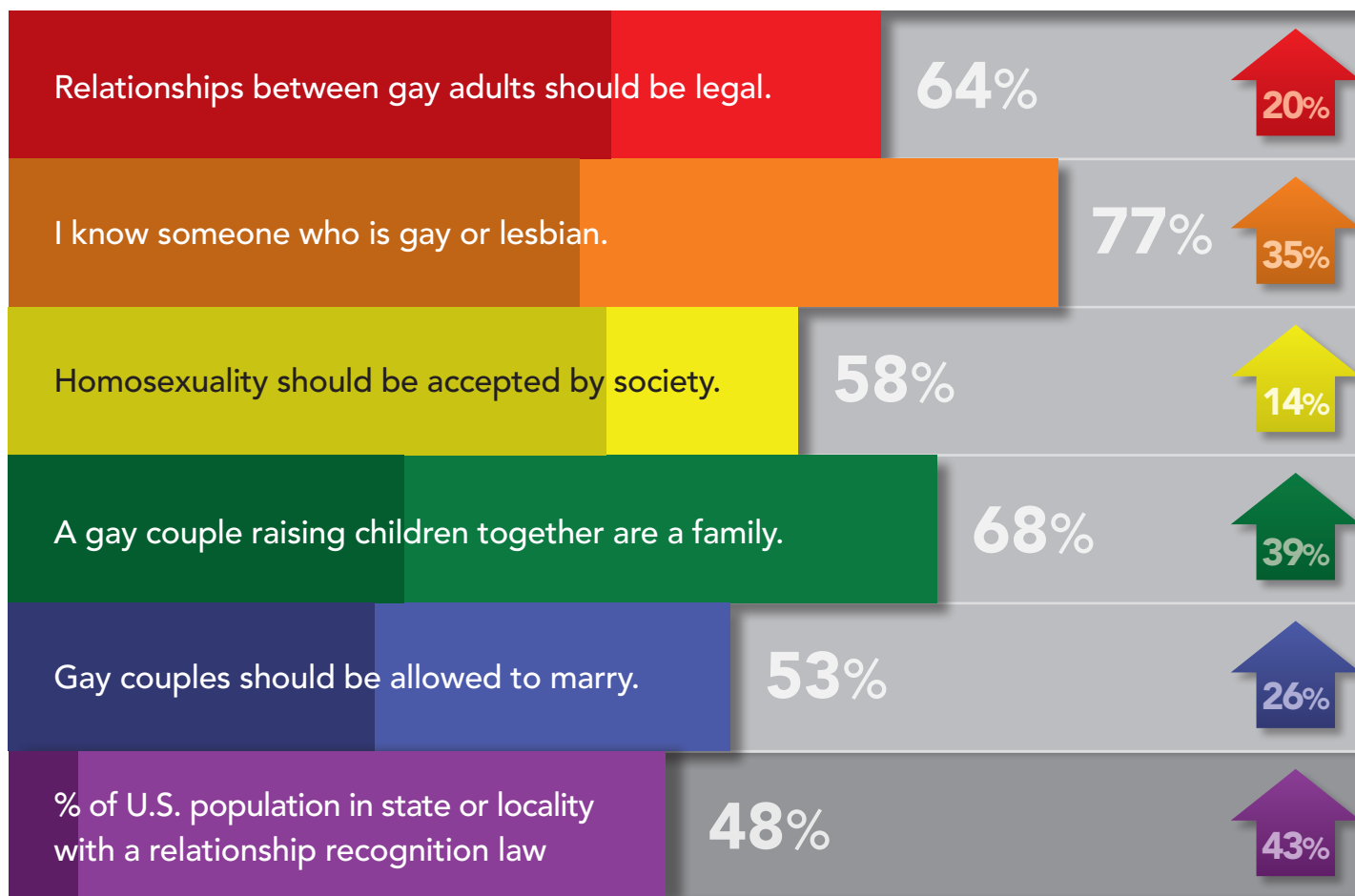


# RECOGNITION RISING

Public Opinion Polling on Gay Issues and Relationship Recognition  
and Net Gains Since 1996 Defense of Marriage Act (DOMA)



*Darker shades represent 1996 percentages—except “I know someone who is gay or lesbian” which is 1992 (1996 unavailable).*

From the Third Way report “Then and Now: How the State of Relationship Recognition has changed since DOMA,” available at: <http://www.thirdway.org/publications/420>. Opinion polling data from Gallup; CBS News; Pew Research Center for the People and the Press; The Roper Center; and *The Washington Post*. Population data from the U.S. Census Bureau (1990; 2010).

© 2012 Third Way. Free for re-use with attribution/link. For more, visit Third Way at [www.thirdway.org](http://www.thirdway.org). Infographic by Bill Rapp.