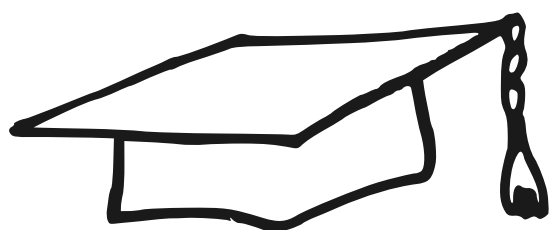


**Q:**

## WHAT IS THE RIPPLE EFFECT OF GRADUATING MORE COLLEGE STUDENTS?

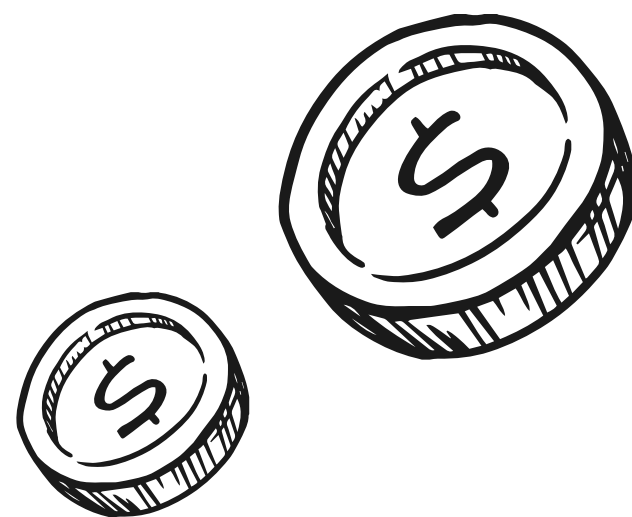


LET'S START BY INCREASING OUR COLLEGE GRADUATION RATES FROM 57% TO THE SAME AS OUR HIGH SCHOOL GRADUATION RATES AT 84%.

DOING SO FOR ONE CLASS ALONE WOULD LEAD TO 1.3 MILLION MORE COLLEGE DEGREE HOLDERS.

THAT EQUALS A NET GAIN OF MORE THAN 107,000 NEW EMPLOYEES IN THE WORKFORCE.

THAT'S MORE \$ IN DEGREE-HOLDERS' POCKETS. EACH YEAR, ASSOCIATE'S DEGREE-HOLDERS EARN \$4,949 MORE + BACHELOR'S DEGREE-HOLDERS EARN \$19,034 MORE THAN THOSE WHO DON'T FINISH COLLEGE.

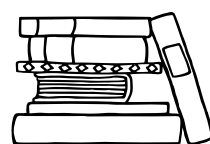


WHICH MEANS \$91 BILLION MORE IN TAX REVENUE TO FUND THINGS LIKE:

**3X**  
THE # OF PELL  
GRANTS

•\$TUITION•

**5,000**  
NEW ELEMENTARY  
SCHOOLS



**23,000**  
MILES OF NEW  
HIGHWAYS



---> AND LEADS TO 48,000 FEWER PEOPLE IN POVERTY. <---

**A:**

## IT'S MORE THAN A RIPPLE, IT'S A WAVE.



FOR MORE, READ THE THIRD WAY REPORT "RIPPLE EFFECT: THE COST OF THE COLLEGE DROPOUT RATE," AVAILABLE AT:

[WWW.THIRDWAY.ORG/REPORT/RIPPLE-EFFECT-THE-COST-OF-THE-COLLEGE-DROPOUT-RATE](http://WWW.THIRDWAY.ORG/REPORT/RIPPLE-EFFECT-THE-COST-OF-THE-COLLEGE-DROPOUT-RATE)